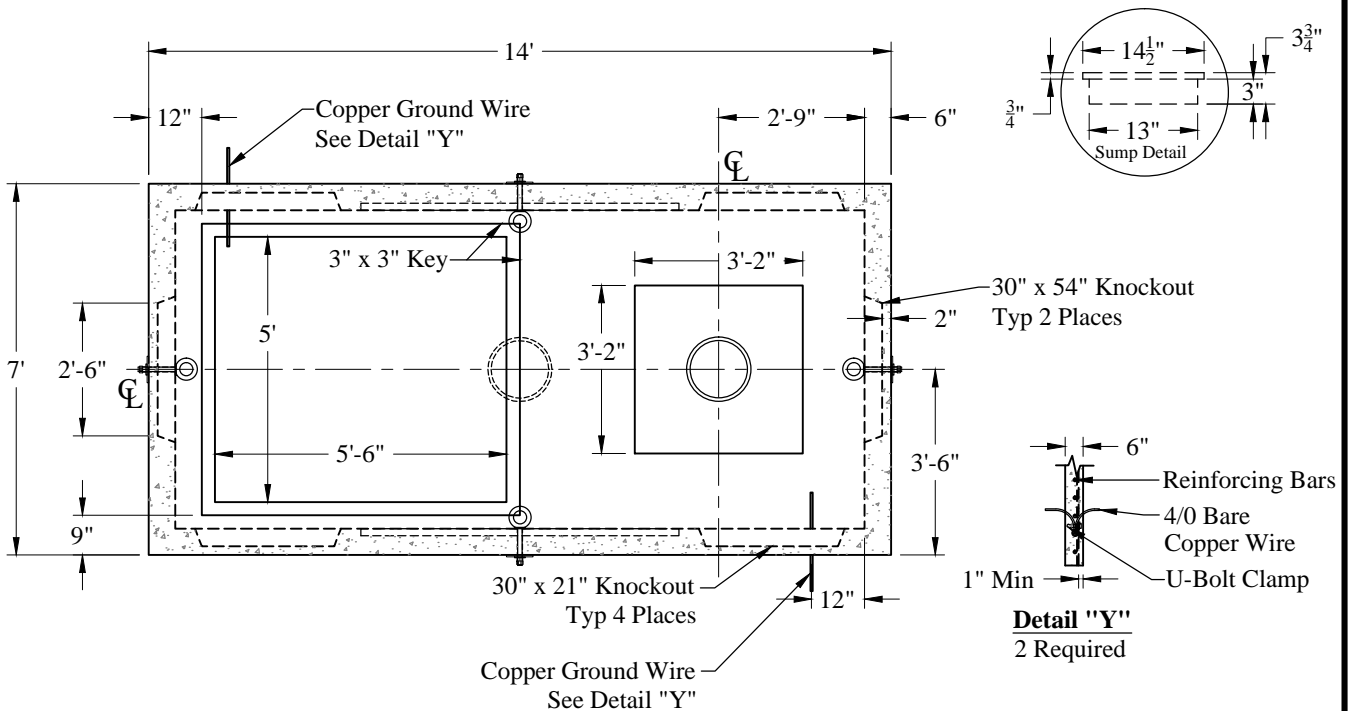


1-800-639-2199

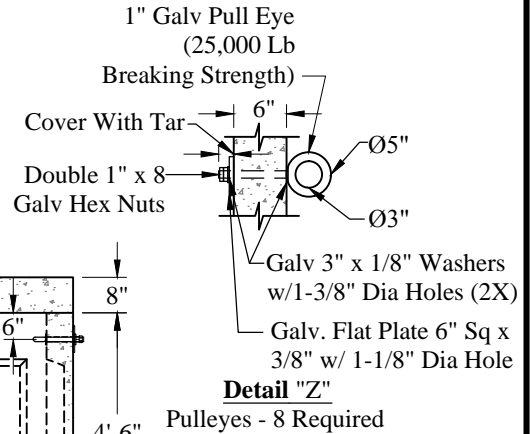
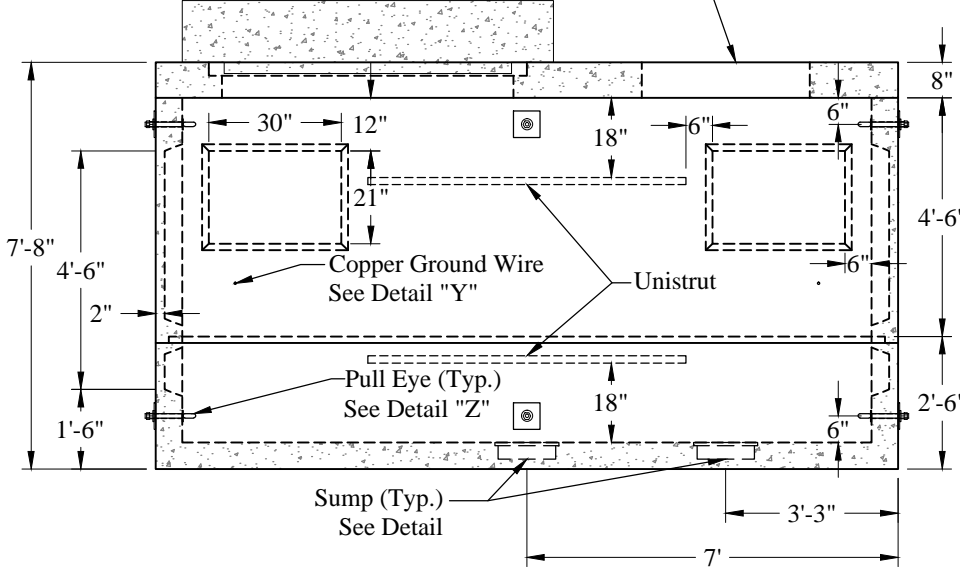
Fax (603) 224-2927

Electrical(NEES_& National Grid) Liberty Utilities_MS3467_7ft X 14ft X 7ft 8in Switchgear Manhole



36" Frame - UM14F
 26" - 36" Ring - UM14R
 26" Cover - UM14C

Collar To Be Specified by Item ID



Est. Weight:
 Top Slab: 5,760 Lbs
 4' Riser: 11,880 Lbs
 Base: 12,920 Lbs
 Total: 30,560 Lbs

General Notes:

1. Concrete: $f_c = 5,000$ psi @ 28 Days Minimum
2. Reinforcing Steel: ASTM-A615 Grade #60.
Min Cover = 1"
3. Design Loading: AASHTO-HS20
4. Item ID # Specified By Collar Type D or E
5. Unistrut to be $1\frac{5}{8}$ " x $1\frac{3}{8}$ " x 6' Galvanized Steel
Embedded in Wall & Tied to Reinforcement.

Phoenix
Precast
Products

Liberty Utilities
MS3467
Switchgear Manhole

P/N: LU-MS3467

77 Regional Drive

Concord, NH 03301

Phoenix Precast Products

Phoenix Precast Products